

Refugees and People Seeking Asylum



A **person seeking asylum** is someone who has left their home country and is seeking protection elsewhere but whose refugee claim has not yet been determined.

A **refugee** is a person who has fled their home country due to persecution, war or violence. Under the Refugee Convention, refugees have a well-founded fear of persecution based on race, religion, nationality, political opinion or membership of a particular social group. They are granted refugee status and special protections.

Everyone has the right to seek asylum and be protected from serious harm, no matter how they arrive in another country. These rights are protected by international law.

Since the end of World War II, **Australia** has welcomed nearly

1 million

refugees and others in humanitarian need.¹



As at mid-2023,

110 million
people

were **forcibly displaced** as a result of **conflict** or **persecution**.



62.5 million are displaced within their own countries

36.4 million are recognised as **refugees awaiting resettlement**

6.1 million are **seeking asylum** in another country²



Most people seeking asylum don't come by boat³



In the 10 years to December 2023,

49 boats arrived

in Australia, with a total of

1114 people

on board.⁴

In the 10 years to December 2022, Australia recognised or resettled

180,073

refugees.⁵

This was **less than 1%** of all asylum applications made globally.⁵



The top 3 source countries for humanitarian arrivals to Australia in 2022 – 2023 were:

Afghanistan: 8,045

Iraq: 2,108

Myanmar: 1,902⁶

1 in 3

adult refugees have experienced **forced separation from family**, and over half are concerned for the safety of family overseas.⁷

When families are separated, it can greatly affect the **mental, financial, and social wellbeing** of refugees and people seeking asylum.⁸



Once settled in Australia, many refugees **face barriers to reuniting their families**. Visa options for relatives are limited and can be costly and slow.⁹



The average **processing time for a permanent protection visa** is **over 900 days**.¹⁰

Parent & Aged Parent visas take around **30 years** to be processed.¹¹

The cost of a **Partner visa** is around **\$9,000**.¹²

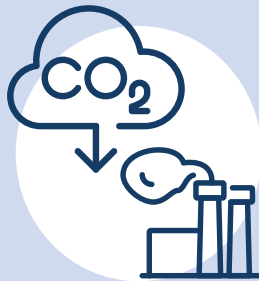
The cost for a **Contributory Parent visa** is over **\$40,000**.¹³

By 2050,

216 million

people could be **displaced** in 6 world regions because of

climate change.



The top three regions are:

Sub-Saharan Africa - 86 million

East Asia and the Pacific - 49 million

South Asia - 40 million¹⁴

People displaced by climate change are **not directly covered by the Refugee Convention**.¹⁵

The settings where refugees report **experiencing discrimination** in Australia are mainly:



the workplace



when looking for work



on the street



on public transport¹⁶

1. Department of Home Affairs. (2024, February 9). *Refugee and humanitarian program – About the program*. Australian Government, Department of Home Affairs. Original figure: [950,000 refugees]

2. United Nations High Commissioner for Refugees. (2023, October 24). *Refugee Data Finder – Key Indicators*. United Nations, UNHCR. 5.3 million are other people in need of international protection

3. Phillips, J. (2015, March 2). *Asylum seekers and refugees: what are the facts?* Parliament of Australia.

4. Refugee Council of Australia. (2024, April 21). *Statistics on boat arrivals and boat turnbacks*. [Graph: Boat arrivals since 1976 by calendar year]. The term “boat arrivals” here refers to people on board the vessels who could not be safely returned and therefore landed in Australia as well as those who were returned to countries of departure or origin. Data as at 16 February 2024.

5. Refugee Council of Australia. (2023). *Is Australia’s response to refugees generous? An analysis of UNHCR Global Trends Statistics from 2013 to 2022*, p 5.6.

6. Department of Home Affairs. (2023). *Senate Standing Committee on Legal and Constitutional Affairs Supplementary Estimates October 2023*.

Department of Home Affairs. (2024, February 22). *Country profiles list*. Australian Government, Department of Home Affairs.

7. Foundation House – The Victorian Foundation for Survivors of Torture Inc. (2023). *Annual Report 2022 – 2023*, p 10. 1 in 3 = 33%. Over half = 55%.

Study includes humanitarian migrants in Victoria who are either permanent residents, asylum seekers or substantive (temporary) visa holders, such as Temporary Protection Visa or Safe Haven Enterprise Visa.

8. Refugee Council of Australia. (2016). *Addressing The Pain of Separation for Refugee Families*, p. 2.

9. Hansen Migration. (2023). *Family Visa Handbook*.

SBS Audio. (2023, February 22). *Settlement Guide: parent visas cost time and money*. SBS.

10. Refugee Council of Australia. (2024, April 17). *Statistics on people seeking asylum in the community*. [Graph: Average processing times for permanent protection visas].

11. Department of Home Affairs. (2024, April 24). *Visa processing times*. Australian Government, Department of Home Affairs.

12. Department of Home Affairs. (2024, March 19). *(Subclasses 309 and 100) Partner visa (apply overseas)*. Australian Government, Department of Home Affairs.

13. Department of Home Affairs. (2024, March 19).

14. Clement, V., Rigaud, K. K., de Sherbinin, A., Jones, B., Adamo, S., Schewe, J., Sadiq, N., & Shabahat, E. (2021). *Groundswell Part 2: Acting on Internal Climate Migration*. World Bank, Washington, DC, p. xxii.

15. Siegfried, K. (2023, November 15). *Climate change and displacement: the myths and the facts*. UNHCR.

Although climate change and disasters by themselves don’t qualify someone as a refugee, they can support a refugee claim when combined with other issues like violence or persecution, or when they have a larger impact on certain groups.

McAdam, J., Wood, T. (2023). *Kaldor Centre Principles on Climate Mobility*. UNSW Law & Justice, p. 8.

16. Department of Social Services (2020). *Building a New Life in Australia (BNLA): The Longitudinal Study of Humanitarian Migrants Wave 5 Update* (Addendum to the Wave 3 Report), p. 23.

This longitudinal study follows humanitarian migrants and their family members who arrived in Australia or had their permanent residency visa granted between May and October 2013.