

Thriving Queensland Kids Partnership

‘weaving systems together - using who and what we have and what we know - to change the odds of Queensland children and young people thriving’

March 2022

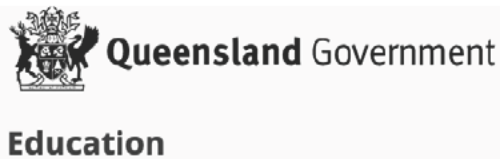


Connect • Catalyse • Amplify

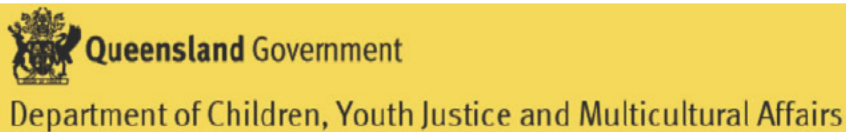
Many thanks to all those who have engaged, including investors:



Children's Health Queensland Hospital and Health Service

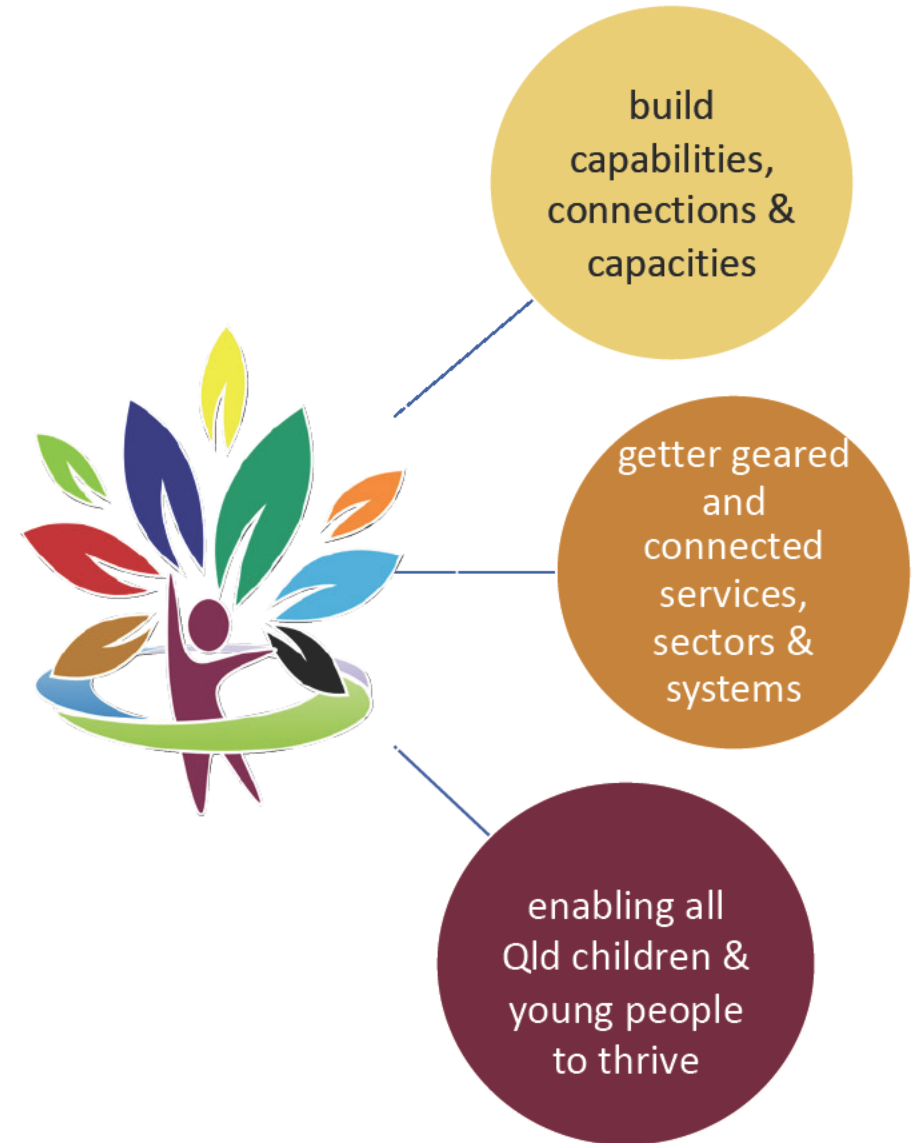


Queensland Mental Health Commission
Improving the mental health and wellbeing of Queenslanders

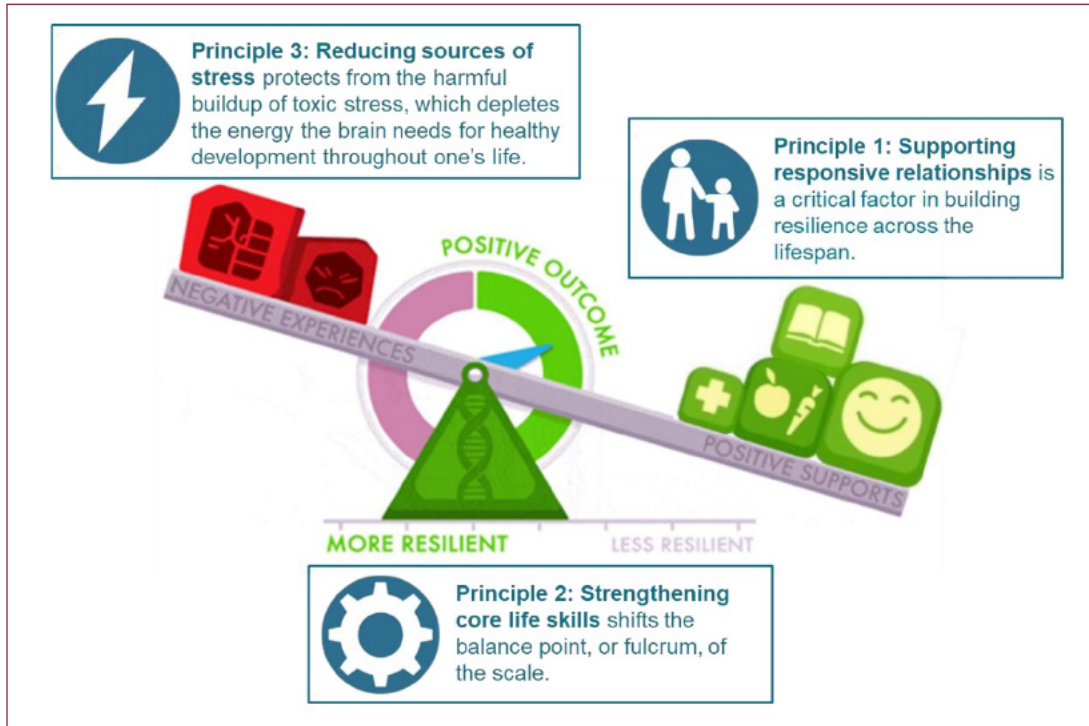


WHO: a 'coalition of the willing' for children & young people

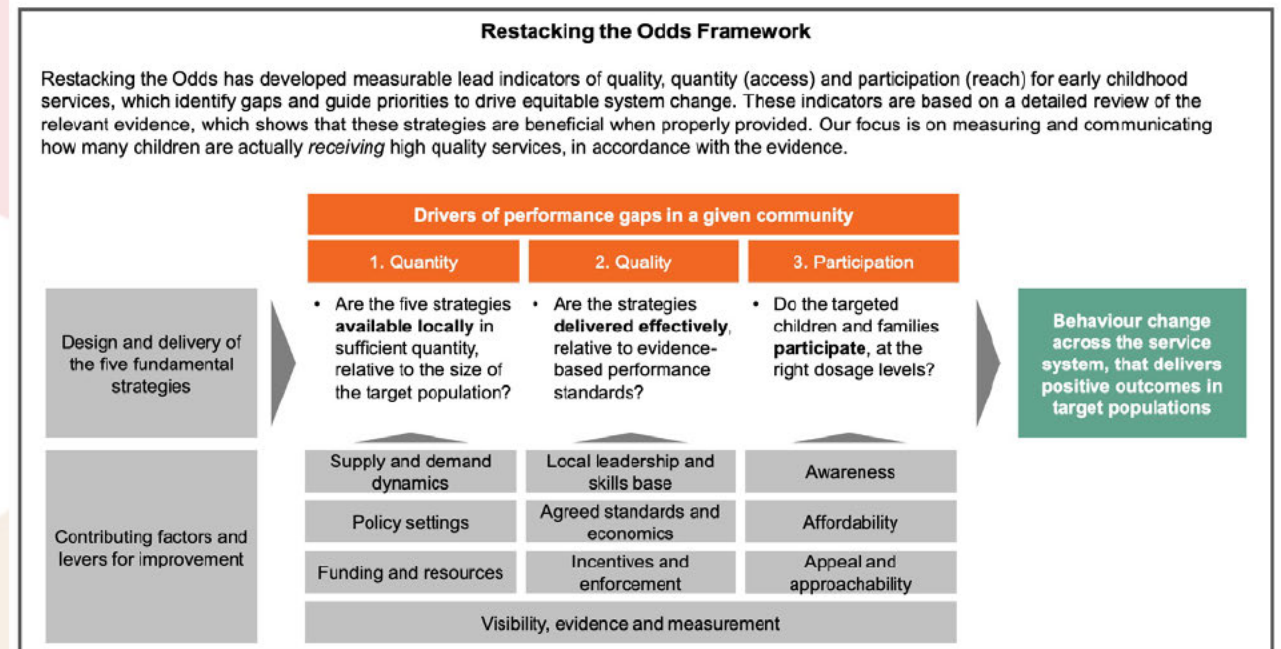
- purpose-driven Qld coalition instigated by ARACY with a systems lens
- engaging a broad range of Qld entities & leaders
- start-up funding: ARACY, CHQ, H&WQld, DoE, DSDSATSIP, DCYJMA, QMHC, QFCC, QUT, GU, PRF
- TQKP Steering C'ee chaired by Frank Tracey
- small core team led by Michael Hogan
- significant support possible from philanthropies for phase 2 (2022-25)



WHY: we need to tip the scales / restack the odds



Courtesy of Harvard Center on the Developing Child / Alberta Family Wellness Initiative (AFWI): see <https://www.albertafamilywellness.org>

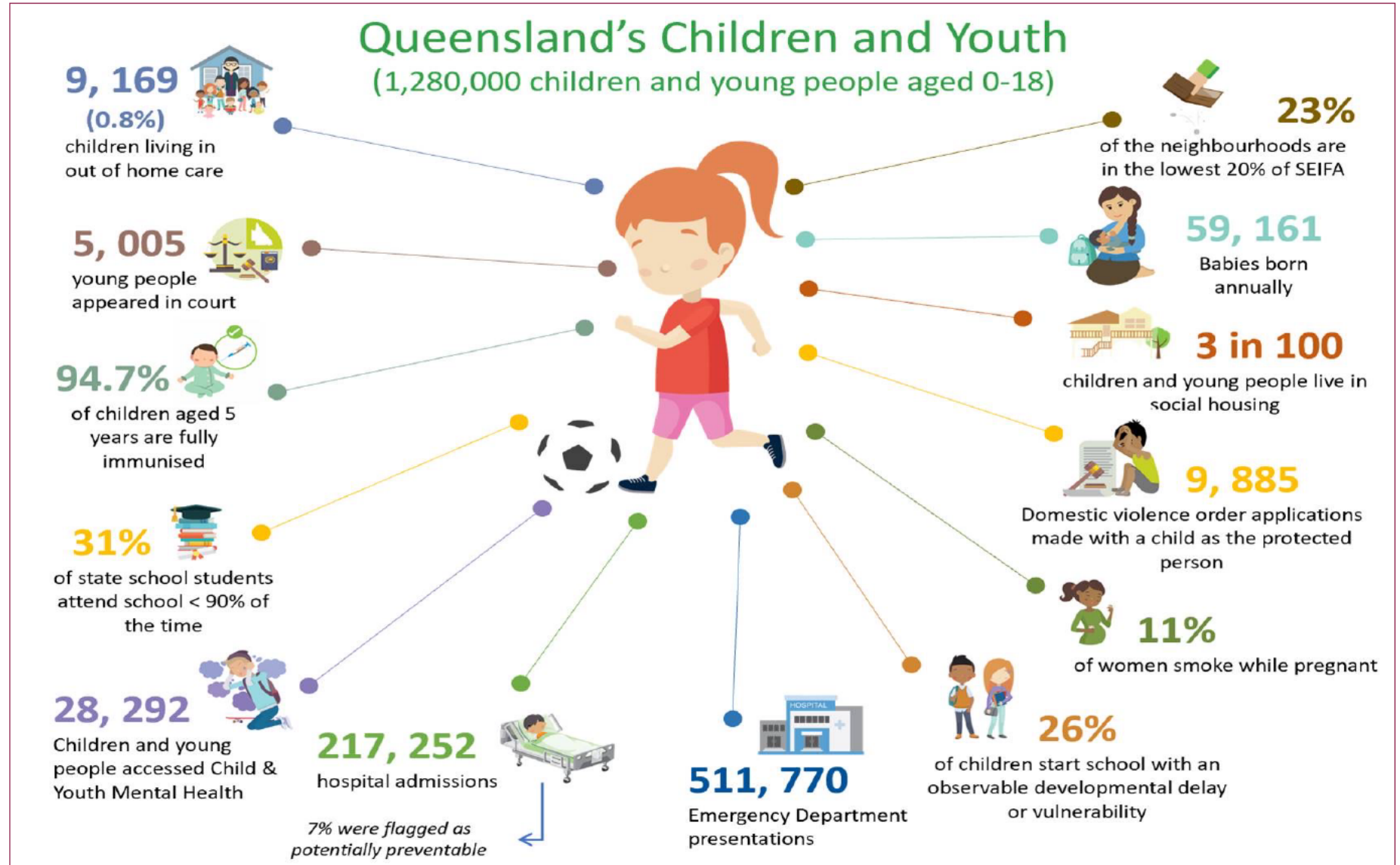


Courtesy of Murdoch Children's Research Institute / Centre for Community Child Health: see <https://www.rch.org.au/uploadedFiles/Main/Content/ccchdev/2111-RSTO-Overview.pdf>

WHY: despite our efforts, too many Qld kids aren't thriving

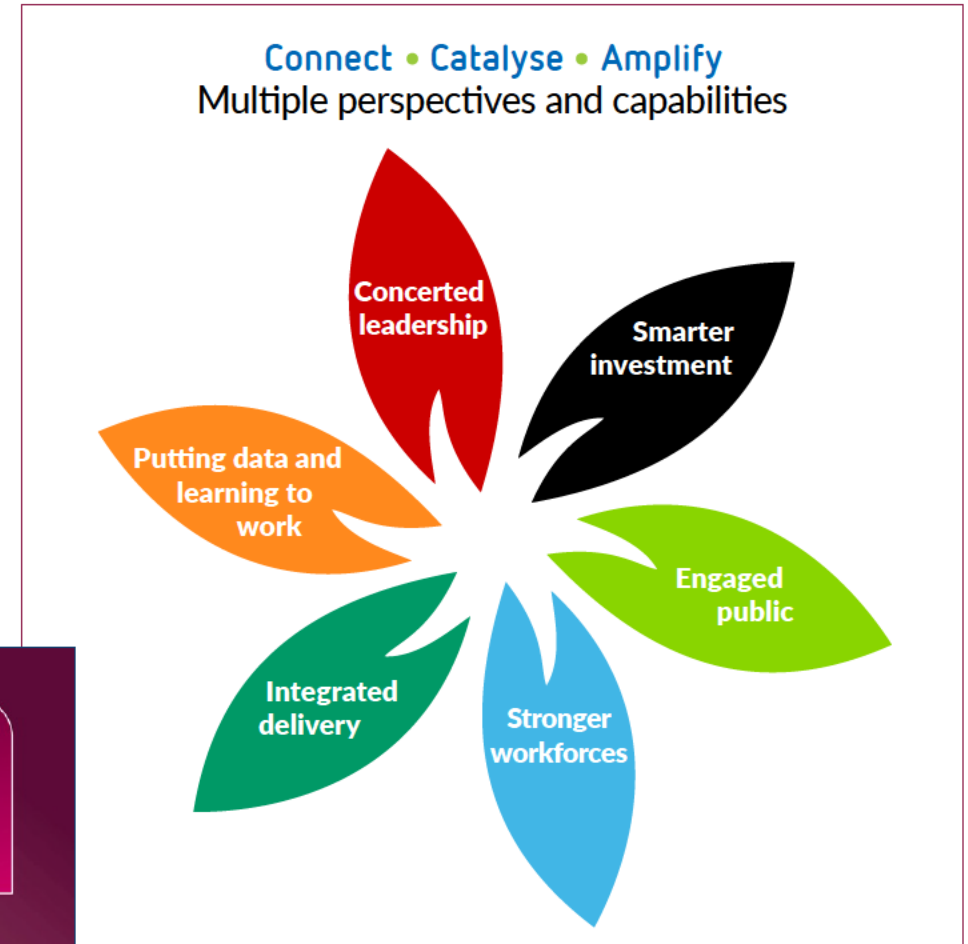
Around 46,000 Qld children and young people are more vulnerable than if Qld was at the national average

Queensland Child and Youth Snapshot sourced from Children's Health Queensland Population Health Intelligence, 2019-2020



HOW: Phase 2 - transitioning from ideation to action

- link to key Govt agendas & strategies
- six system levers: domains for change
- focus on fragmentation & rubs
- systems coalition & intermediary
- knowledge translation & roadmaps
- five key activities:
 - > convening
 - > brokering
 - > co-creating
 - > learning, and
 - > supporting.



HOW: Phase 2 initial Innovation & Development initiatives ...



1. Thriving Qld Kids Core Story

Engaging parents, caregivers and workers across sectors to tell the “core story” of the importance of child and adolescent development in ways that cut through. TQKP implementing existing R&D on evidence-based framing.

Partnering with Parenting Research Centre, Telethon Kids Institute, Frameworks Institute and Qld agencies & entities



2. Thriving Qld Kids Data Roadmap (Phase 2)

Will develop and advance business case to deliver better access to and support with sense-making of data that enables partners and places across the eco-system to plan, make decisions and track progress of child and youth wellbeing

Led by Health & Wellbeing Qld, with CHQ and Qld Govt agencies, QUT Centre for Data Science & GU, NFPs



3. Thriving Qld Kids Brain Builders Program

Uplift the capability of Queensland’s multi-sector child and family workforces to understand, use and apply contemporary neuroscience. Qld brokering a multi-faceted program

Partnering with CHQ, Emerging Minds, Health & Wellbeing Qld, Qld Govt agencies (inc. Dovetail), Yiliyapinya, QUT, USC, JCU, CQU, Palix Foundation (Alberta Family Wellness Initiative) and a wide range of NFPs



4. Thriving Qld Kids Community Leadership Capability Program

Enhancing community leadership and collaboration in over 100 local “Birth to Five” early years networks established across Queensland.

Led Qld Dept of Education working with Connect for Children networks, 54 Early Years Places & Partnership Facilitators

WHAT: existing Child-focused place-based initiatives in Qld

TQKP looking to link together Qld child-focused, place-based initiatives

- 16 x Communities for Children (Cwlth - DSS) > e.g. Cairns South Together
- 2 x Stronger Places, Stronger People (Cwlth - DSS / State - DCHDE) > Logan Together & Gladstone
- 102 x Connect for Children Birth to Five Networks (Qld – DoE)
- 3 x Connected Beginnings (Cwlth - DESE & DoH) > Doomadgee, Rassmussen & Mareeba
- plus Local Thriving Communities (Qld - DSDSATSIP) & Empowered Communities (Cwlth - NIAA)

existing supports

- *The Nest* child and family wellbeing outcomes framework (ARACY)
- Communities for Children Facilitating Partners (Salvos, Smith Family, Mission Australia, YourTown, Uniting Care Community, T'ville Diocese)
- 144 Neighbourhood and Community Centres / DCHDE's Thriving Qld Communities Grants
- QCOSS *Place-based Strategy 2021-22, Guide & Tool Kit*
- Collaborate for Impact *ChangeMakers* webinars

WHAT: previous Qld framework

Place-based Evaluation Framework

A guide for evaluation of place-based approaches in Australia

Prepared for the Queensland Government Department of Communities, Disability Services and Seniors (DCDSS), the Australian Government Department of Social Services (DSS), and Logan Together

27 August 2018

By Jess Dart

Supported by



Framework for Place-Based Approaches Supporting our Future State: Advancing Queensland's Priorities

This **Framework for Place-Based Approaches** outlines the importance of community, industry and all levels of government working closely together to improve community wellbeing via place-based initiatives.

The framework recognises the importance of community and industry readiness and values the active participation and responses of all stakeholders in any place-based approach.

Community: Communities are the centre of all place-based approaches. The elements listed in relation to community readiness and responses were adapted from the national *Evaluation Framework for Place-Based Approaches* (pending). This work was commissioned by the Department of Communities, Disability Services and Seniors and the Australian Government Department of Social Services.

Industry: Partners from a range of industry groups are playing a key role in place-based approaches. The elements listed in relation to industry readiness and responses were taken from the Community Services Industry Alliance's report *Investing for Outcomes: An Industry-led Approach*. This work was commissioned by the Department of Communities, Disability Services and Seniors.

Important reforms will take place in the way the **Queensland Government** engages, plans, commissions, shares and analyses data with community stakeholders. Enhancing the skills of the Queensland Public Sector (QPS) also features in the reform work.

The Queensland Government is also supporting community and industry readiness and responses through a range of initiatives so that all community stakeholders can play their part in supporting communities to thrive.

Coralee O'Rourke, MP
Minister for Communities and
Minister for Disability Services and Seniors

Queensland Government's priorities



Outcome: Improved community wellbeing

Social wellbeing

Economic wellbeing

Age-friendly

All abilities

Diverse and inclusive

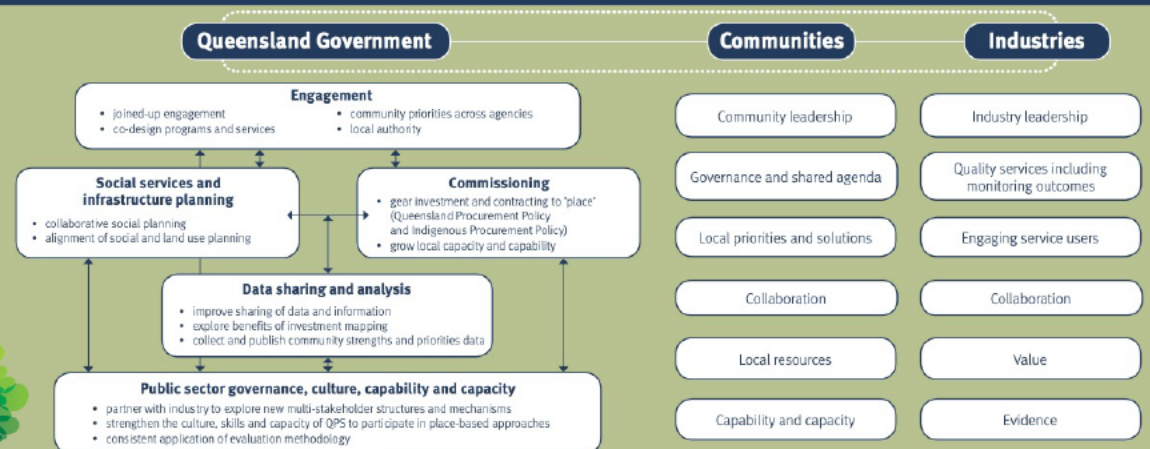
Resilient

Approach: Place-based initiatives

Place-based approaches join up the efforts of all community stakeholders (citizens, industry, diverse non-government organisations and all levels of government) to improve the social, economic and physical wellbeing of a defined geographical location. These approaches are highly collaborative, take time and are ideally characterised

by partnering and shared design, shared stewardship, and shared accountability for outcomes and impacts. Place-based approaches are often used to respond to complex, interrelated or challenging issues such as social and economic disadvantage, natural disasters or environmental problems.

Readiness and responses: Place partners

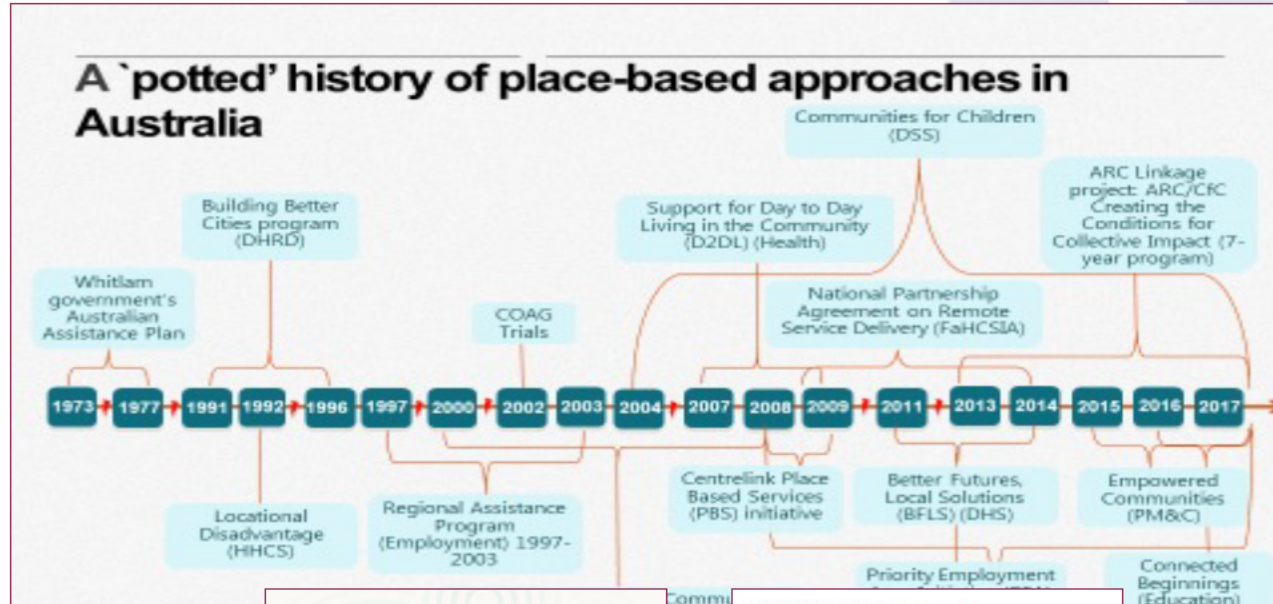


Child-focused place-based initiatives in Australia

Courtesy of Prof Tim Reddel, 'Place and public policy - Some reflections', ISSR, University of Qld

Stronger Places Stronger People

Community-led systems change to disrupt disadvantage



A framework for place-based approaches
The start of a conversation about working differently for better outcomes

Elements present in Place-Based approaches (Definitions)

Local Governance Structure - Governance structures typically include leadership groups, and local working groups. Leadership groups typically include cultural and community leaders and may include residents, service providers, government and business representatives, philanthropists, and other funders. The degree of power-sharing enabling communities to lead within these groups varies. Some place-based initiatives have government or service provider-led local governance, others create the space for community and cultural leadership.

Local Community Input and Authority - The local community drive their plans for change through their leadership groups and are assisted by their backbone organisation, community partners, philanthropists, government representatives and other key stakeholders. Place-based approaches require a level of partnering that puts the community in the driver seat and allows significant and meaningful local ownership in determining the issues and solutions.

Local Community Change Agents - A change agent (also known as a 'shared agent' or 'community strategist') is developed to guide the community's vision for change, with a plan of action to achieve that vision. The community strategist reflects the aspirations of the community as a whole, gathered through inclusive engagement, using data and evidence to determine where to focus effort. Philanthropic input - There may be philanthropic support/ investment in the place-based initiative.

Joined-up working - Joined-up working may refer to anything from collaboration between the community, government and private sectors, through to a true partnership between community government and all other partners where input, solutions and power is equally shared.

Long-term focus - Place-based approaches take a long-term focus on outcomes, rather than immediate outputs. This recognises that community level change takes time.

Backbone organisation - The backbone function is essential to ensuring the place-based initiative maintains momentum and facilitates impact. The backbone organisation does not set the agenda, but rather it enables and supports the impact of the broader collective effort. They provide a strategic and executive coordination function including through inclusive community engagement, supporting development and implementation of the community change agenda, and the collection and analysis of data, measurement and evaluation.

Data-sharing arrangements - Place-based approaches often have a focus on strategic learning, data and evidence. Data is usually held in a range of government departments and data-sharing arrangements need to be put in place to 'unlock' and make available this data. This is critical to support decision-making, implementation and evaluation.

Integrated approach - Place-based approaches can take an integrated (social, economic, cultural, environmental) approach to change as distinct from a programmatic focus (e.g. early childhood).

Outcomes Focused Evaluation - The evaluation of place-based approaches is focused on changes in outcomes within the community. Continuous improvement and learning is also a focus of evaluation and review of progress.

Elements common to Community-led initiatives (including collectives)

| | Communities for Children (FaHCSIA) | Stronger Communities (National Indigenous Australians Agency) | Communities for Children (DSS) | Stronger Places (FaHCSIA) | Empowered Communities (PM&C) |
|-------------------------------------|------------------------------------|---|--------------------------------|---|------------------------------|
| Local Governance Structure | Democratized | Democratized | Democratized | Comprehensively democratized (Community-led) | Comprehensively democratized |
| Local Community Input and Authority | Democratized | Comprehensively democratized | Democratized | Comprehensively democratized | Comprehensively democratized |
| Local Community Change Agents | Comprehensively democratized | Comprehensively democratized | Comprehensively democratized | Comprehensively democratized | Comprehensively democratized |
| Philanthropic Input | Not demonstrated | Not demonstrated | Democratized | Comprehensively democratized (Philanthropic) | Democratized |
| Joined-up working | Democratized | Democratized | Comprehensively democratized | Comprehensively democratized | Democratized |
| Long-term focus | Partially demonstrated | Partially demonstrated | Democratized | Comprehensively democratized | Democratized |
| Backbone Organisation | Comprehensively democratized | Comprehensively democratized | Democratized | Comprehensively democratized | Comprehensively democratized |
| Data-sharing arrangements | Partially demonstrated | Not demonstrated | Comprehensively democratized | Comprehensively democratized (Robust level agreement) | Democratized |
| Integrated approach | Not demonstrated | Not demonstrated | Not demonstrated | Comprehensively democratized | Comprehensively democratized |
| Outcomes Focused Evaluation | Partially demonstrated | Comprehensively democratized | Democratized | Comprehensively democratized | Partially demonstrated |

*Not available understanding of these initiatives as at May 2019. Note assessment not claimed by lead agencies.

Funding community-led place based practice

Insights and actions for funders and communities

Report by: *we2i* with Logan Together, Go Goodfellow, Connecting Community to Skills, The Hub, Sevenson Adams, Monique Community HUB, Social Ventures Australia and The Australian Centre for Social Innovation.

May 2019

The evidence: what we know about place-based approaches to support children's wellbeing

Collaborate for children: scoping project
Produced by the Centre for Community Child Health
Funded by the Australian Government Department of Education
November 2014

Place-based approaches to building the ECD ecosystem: Opportunities and benefits

WORKING DRAFT — September 2021

This study explores how place-approaches can help the ECD system to deliver a 'triple dividend':

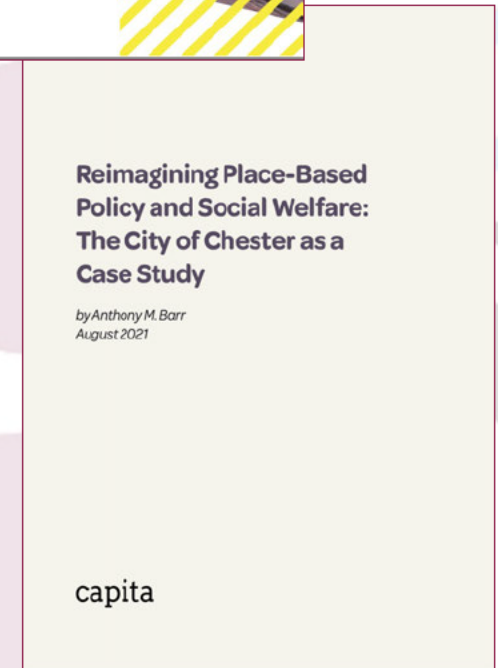
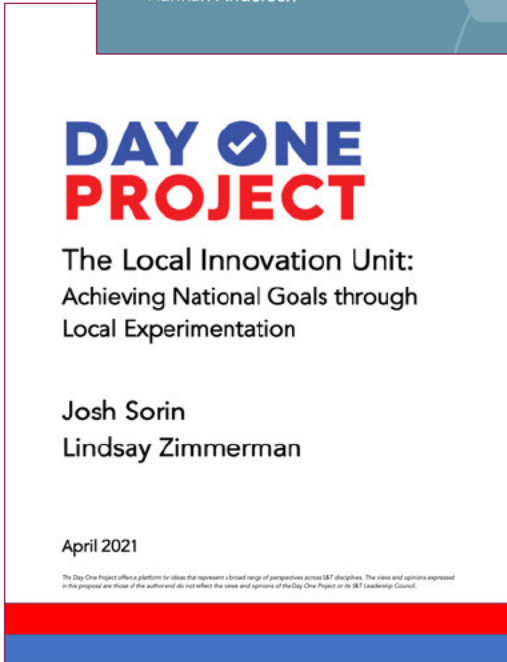
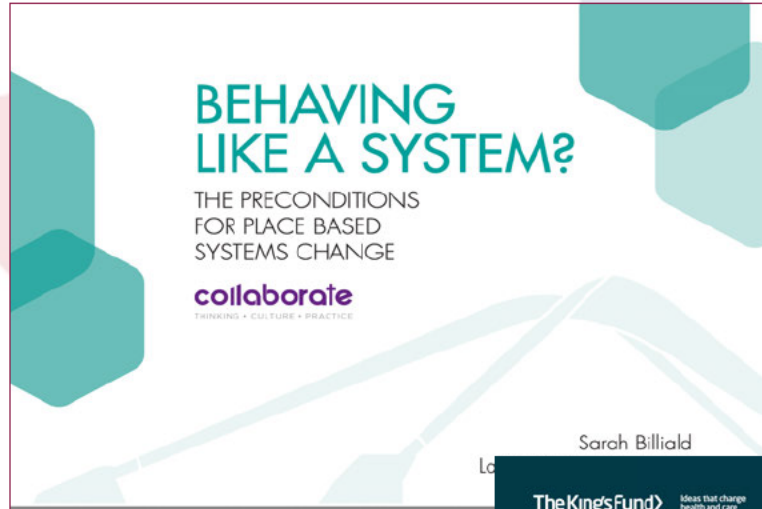
- Lifetime benefits for children
- Family wellbeing, economic participation
- Better ECD careers, stronger workforce

Better ECD careers, stronger workforce

Family wellbeing, economic participation

Lifetime benefits for children

Child-focused place-based initiatives in UK



Opportunities

Supported and capable caregivers + good jobs + good housing + good health + good ECD/schools + healthy environments + strong communities ... = kids thriving!

TQKP is engaging with a network of local leaders and collaborators involved in child-focused, placed based initiatives

We are working toward a workshop in mid May at Parliament House at the invitation of the Speaker Curtis Pitt

Some emerging themes being canvassed include:

- Greater recognition of local efforts and achievements
- Better connections with decision-makers and influencers
- Better connections and sharing across and between the child-focused, place-based initiatives, and with state and national efforts
- Greater effort to address systems barriers: data, 'program-itis', inflexible short-term investments, capability building ...
- Greater support for local innovation and integration

Opportunities

1. **Make ‘thriving and resilient places’ a key feature of Unite and Recover ‘build back better’ strategies** that integrate social, economic, environmental health and wellbeing and give focus to child well-being
2. **Acknowledge the vital role of, and opportunities for, State MPs and local governments as existing ‘champions’** for places and for children, young people and families!
3. **Leverage off existing strategies and initiatives**
e.g. Connect for Children, Early Years Places, Kindy, hubs, neighbourhood centres / community recovery etc
4. **Refresh Qld’s strategic framework for place-based, inter-generational work**
to support local child development & family well-being efforts and address systems issues and enablers >
concerted leadership + smart investment + integrated delivery + data and experience + stronger workforces + public and caregiver engagement

Opportunities

- 5. Engage with the (next) Commonwealth Government (and local governments)**
to reduce fragmentation and roll up the plethora of existing child-focused, place-based programs and provide capability building backbone support
- 6. Engage with Qld-based and national philanthropies and institutes**
in a *Thriving Places, Thriving Kids* initiative (ala the WA Government & Minderoo Foundation's \$49M x 4-year *Early Years Initiative!*)
- 7. Back TQKP, our four foundation collaborative initiatives - Core Story, Data Roadmap, Brain Builders, Community Leadership - and our work connecting leaders and local catalysts**
from Qld's child health and development, learning / education, family and community sectors to support Qld's existing and emerging child-focused, placed based initiatives, as a means to weave systems together to create the enabling conditions and tools for successful place-based efforts