

Creating a Place-Based Data Framework: Processes and First Phase Outcomes

Creating a Place-Based Data Framework

Data is often cited as the most significant barrier for Place-Based Initiatives (PBIs) to get to shared decision-making and measurement.

In 2023 Thriving Qld Kids Partnership brought together people and organisations who have deep understanding of PBIs, data, and change processes to co-design a Place-based Data Framework that would support PBIs to overcome the systemic data barriers experienced by many.

The purpose is to create a framework to guide practitioners in place on building a shared understanding of the 'how to' of accessing, collecting and using data for the purpose of shared measurement and shared decision-making. We recognise a need to develop an overarching framework to guide efforts in PBIs to access, collect and use data to inform and measure social change. The 'what' includes key components and practical resources that strengthens practices needed to use data for learning and action, help us to understand opportunities for shared learning and capacity building, along with providing the critical data and evidence to understand the impact of their work.

This paper will

- provide an overview of the proposed architecture- the key components, data types,
- describe what needs to be included in the framework to equip PBIs in their journey to shared decision making and measurement, and
- propose the next steps for building the place-based data framework, identifying the current gaps and opportunities.

The design team (below) collaborated over four workshops, co-facilitated by Infoxchange as part of the [Data Catalyst Network](#). The proposed framework is a result of these workshops.

The design team

The design team is a collaboration between people from the following organisations who have collectively shared their wisdom and practice knowledge to develop a framework

- Restacking the Odds – Murdoch Childrens Research Institute (MCRI)
- Logan Together
- yourtown
- Gladstone Region engaging in action Together (GRT)
- Misson Australia
- Department of Treaty, Aboriginal and Torres Strait Islander Partnerships, Communities, and the Arts
- Childrens Health Queensland
- Nexus -Foundation Partners (UQ)
- Griffith University
- QCOSS
- University of the Sunshine Coast
- Infoxchange
- Hand Heart Pocket
- Department of Social Services – SPSP
- Department of Health
- Brisbane North PHN – Southern Moreton Bay Islands (SMBI)
- SEER Data
- Thriving Queensland Kids Partnership
- Queensland University of Technology

Why is this important to build a Place-based data framework?

As place-based work is increasingly moving to the centre of policy and investment design, despite the interest and growth in PBIs, it has difficult to make firm conclusions about their effectiveness. However, the uncertainty around results is more an issue of ‘absence of evidence’ rather than the ‘evidence of absence’ (Inspiring Communities and Tamarack 2014; Moore et al 2014), This is leading to a sense of urgency to support and build practice around shared decision making and measurement, which is key to understanding impact.

Data is a key contributor in this, but for many practitioners’ access to and the effective use of data is one of the most challenging parts of their work. A report by QCOSS also indicates that while there is enthusiasm across community organisations to utilise data, methods used are primarily informal and rarely integrated, proposing the following recommendations (i) build data capacity, (ii) standardise approaches to collecting data, (iii) invest in a dedicated shared resources.

We know that data is the heart of continuous learning: the regular gathering, analysis, and reporting of data allows PBIs to act and learn what’s working and celebrate success along the way. Even if precise measurement and attribution isn’t possible, analysis of qualitative and quantitative data can illustrate broad directions of travel.

There are lots of gaps in PBI data, this framework will make those gaps clear - providing an invitation for others to fill the gaps with new knowledge. Data is mentioned in most policy documents, working in place requires us to find new ways of accessing and using data to inform change. This requires joined up thinking and a clear strategy.

The boundaries and the scope of the framework

This framework does not address evaluation except where evaluation overlaps with shared decision making and measurement. An excellent discussion on this topic is found in the [Place-based Evaluation Framework developed](#) by Jess Dart (2018) see figure 1.

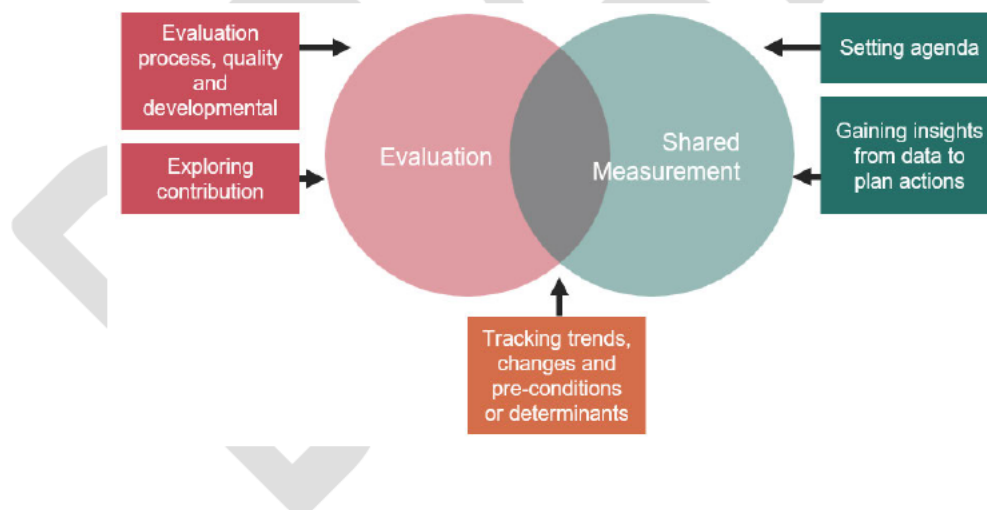


Figure 1

The Scope

Within Scope	Outside Scope
<ul style="list-style-type: none"> • It addresses the various types of data needed; population, service, administrative, system and local/voice. • It outlines the key elements, preconditions, principles, and processes that enable PBIs build and use data for learning, acting and measuring. • It provides a high-level overview of tools, techniques and resources that are required to collect, analysis and share data. 	<ul style="list-style-type: none"> • This Framework does not cover some of the more technical aspects such as data architecture, including storage platforms.

How the Framework was developed

The Double Diamond Design framework developed by the [Design Council](#) was used and adapted to support deeper inquiry, supporting a process of exploring an opportunity or issue more widely and deeply (divergent thinking) and then developing focused actions (convergent thinking).

The design team met over four workshops, the table below provides an overview of the process.

Discover Workshop 1	Frame the project problem, build the team and get ready for co-design	<ul style="list-style-type: none"> How do we describe shared measurement in place-based work? What are the data elements that inform this? What can the project leverage, build on or inform? Who are the end users and what are the users requirements?
		Draft framework developed
Define Workshop 2	Build understanding and learning from lived experience	<ul style="list-style-type: none"> Draft framework shared What works well? What is important? What is missing? Where are their case examples of good practice?
		Interviews conducted-case examples gathered
Develop Workshop 3	Make sense of what has been learnt, identify key touchpoints and opportunities	<ul style="list-style-type: none"> Case studies shared Framework refinement and testing Content developed
		Framework architecture and content developed and tested
Deliver Workshop 4	Create solutions, test, learn and adapt	<ul style="list-style-type: none"> Refined Framework presented for testing Content finalised Actions identified
		Framework action plan developed and projects scoped

The Key Components of the framework

The framework sets out the key components, describes the resources and supports for each component and outlines leverage points and connections. The below diagram (fig 2) outlines the seven interconnected components and practices that support PBIs use data to share, learn, act to enable shared decision making and measurement. The following pages outline leverage points and connections.

Seven Components of the framework

1. Principles
2. Conditions
3. Enablers
4. Knowledge exchange
5. Learning Together
6. Acting Together
7. Data Buckets

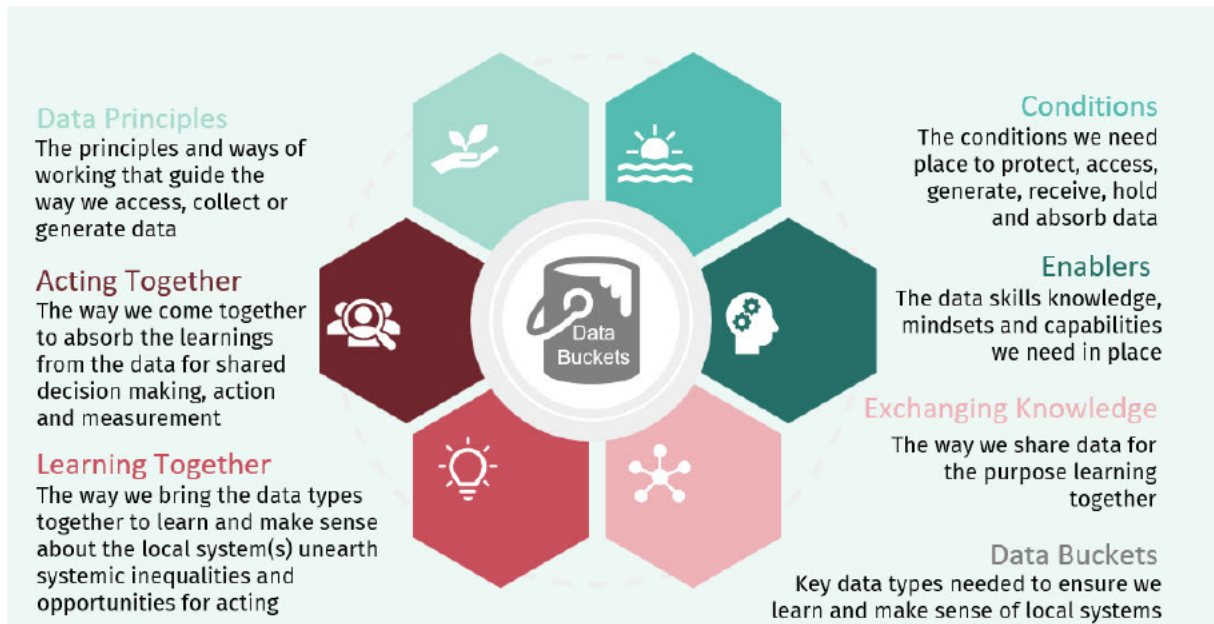


Figure 2

Through the discovery phase the design team identified that there is significant investment and progress for PBIs in accessing population data, but not as much effort or investment in the other key components described.

The following key components were identified as opportunities for investment

- Service Data Bucket- lack of available data
- Community Data Bucket- resources to help with collecting and analysing community intelligence
- Learning and Acting Together- how to connect data buckets for learning and acting
- Exchanging Knowledge- data access agreements
- Conditions- data governance and practical resources
- Enablers- skills and attributes needed now and into the future

The Data Buckets

The report, *Measuring What Matters* (Bridges & Woolcock, 2022), remind us that “Data is not an end in itself: data’s primary purpose is not just monitoring processes, compliance, and outcomes, but contributing to problem-solving and organisational learning”. More and better data will not fix a problem if the absence of such data is not itself the key problem or the binding constraint”.

PBIs therefore need to embed their approach in a broader problem-solving framework. The key to working with data is first identifying the problem the PBI is addressing, then thinking about what data is needed to understand the problem and generate a solution. PBIs may be well placed to integrate complementary qualitative data and lived experience with broader population quantitative data apprehend and interpret local contexts and complex realities more accurately.

Four key data types or ‘buckets’ of data for PBIs (fig 3) were identified. The data types reflect the data ecology in which PBIs operate – from the ‘macro’ world of population data as a broader context for problems and measuring population change over time, through the mid-level of research data, to the ‘micro’ of service and community data where the problems are experienced at the local level. These are needed to ensure we learn and make sense of the local system(s) unearthing the inequalities and opportunities for shared decision making and action.



Figure 3

The How – Building the framework

Under each of the interconnected components the design team identified supports and resources that would provide practical assistance for PBIs in the data journey.

The design team worked on building the frameworks while being guided by general principles that the framework's content needs to be grounded in practice, built collectively and provide:

1. accessible and practical resources (tools, templates, checklists, links)
2. practice support (case examples, guidelines, hints, tips)
3. a structure that enables collective sharing, learning, mentoring and peer support

The table below identifies the content needed for each component, including the data buckets.

Area	What needs to be included in the framework
Population Data Bucket	<ul style="list-style-type: none"> • List of evidence-based populations measures across the life course and domains of wellbeing • Catalogue of populations data assets (open/closed) and list of who the data custodians and how to access the data • Data access request (shell template) • Data dictionary • Links to data platforms (ACWDA, QFCC, QCOSS, etc.) • Log to collectively identify data gaps- scope and test instruments for new data assets (social inclusion) • Tips and templates to support developing questions to ask • Data storage and governance requirements
Service Data Bucket	<ul style="list-style-type: none"> • List of the types and granularity of service level data to explore (demand, quantity, quality, demographics, engagement, outputs, funding, participation, unmet, workflow etc.), including practice support in interpreting the data • Links to policy, strategic and practice guidelines, data manuals • Data collection guide, including definitions, tools, templates (Gladstone) • Data collection templates • Data sharing agreement templates
Community Data Bucket	<ul style="list-style-type: none"> • Supports in generating and accessing community voice and wisdom • List of methodologies and platforms (including examples) for collecting

Area	What needs to be included in the framework
	<ul style="list-style-type: none"> • Consent form template • Tips and uses of social media in gathering community intelligence • Survey tools and templates (with a list of key questions and validated questions) • Tools and supports for analysing qualitative data • Ethical considerations tips and checklists • Techniques to support feedback • Storage, privacy and sharing of community intelligence
Research Data Bucket	<ul style="list-style-type: none"> • List and links to research, research institutes, peak bodies for different content area expertise • Tools and tips for searching and collecting research (google scholar etc), including the different types of research • Tools on how to combine data sets for analysis and insight generation • Explanation on the role of research including tools and tips for using research to build collective understanding • Research partnership MOU templates
Exchanging Knowledge	<ul style="list-style-type: none"> • Data sharing agreement templates-How to put in place appropriate government structures • Data maturity model that articulates the different data needs at different stages of initiative maturity. • Tools, methods and platforms (such as AI) for analysis and storage of data • Consideration checklist (eg who has access) • Sharing what matters for different audiences - tips on how to visualise data for different audiences- Graphical reporting templates and examples • Tips on addressing bias and assumptions • Content register log of PBIs data projects (ie homelessness, first 1000 days) to allow for peer connection and learning
Learning and Acting Together	<ul style="list-style-type: none"> • Tips, practical examples, and practice support in how to connect and use data to empower communities led decision making (art and heart)- quality continuous improvement • Context and maturity of models • System mapping tools and examples for connecting data • Problem solving canvases
Principles	<ul style="list-style-type: none"> • Describe the key principles and explain what this looks like in practice • Key areas for principles to cover include - relational no transactional (trust), courageous, strength-based, collaborative, shared ownership and management, no data without narratives, focus on learning, simple and flexible, data at the right time, data sovereignty, protecting the space for deliberation, embracing an active role for qualitative data, focusing on data close to the problem
Conditions	<ul style="list-style-type: none"> • Description of the capabilities needed in place • Data governance- to support how PBIs in generating, receiving, holding, storing, and absorbing data
Enablers	<ul style="list-style-type: none"> • A list of mindsets and skills needed to support PBIs across the different stages of PBI data maturity • Skills list that can support PBI recruitment of data positions • Links to organisations and their data skills, including examples of how PBIs have utilised external supports

Leverage points

The framework will be continually tested, ensuring we build and leverage what we know and what already exists and to make it available for PBIs to use and adapt to their communities

need. This is because most PBIs are accessing and using data they are also creating or sourcing techniques, tools, practices and resources to support them.

Ideally the Framework should be hosted online and be regularly updated. Participants agreed that it is important to start with a 'Beta' version that makes resources available sooner (with the caveat that the Framework is a work in progress) rather than wait lengthy periods for finalised materials. This is particularly important at a time when AI developments are leading to rapid ongoing changes.

Below is a list that can be drawn upon in the development of the framework content.

Practice Support – case examples, hints and tips	
Logan Together	<ul style="list-style-type: none"> Identifying robust methodologies to measure and monitor social cohesion Shared Decision-making practice guide, case study, model Linked Data project (MADIP, Life Course data)
QCOSS	<ul style="list-style-type: none"> Place-based approaches guide and toolkit Research and Evaluation Network Resource Hub recordings Using Consumer data for continuous improvement
SEER	<ul style="list-style-type: none"> Indicator bank
Gladstone	<ul style="list-style-type: none"> Data Sharing Agreements Service Data Support and Reports Data reports
SMBI	<ul style="list-style-type: none"> Data Sharing Agreements Learning Canvas
Restacking the Odds	<ul style="list-style-type: none"> Early Childhood Development System Mapping A framework of evidence-based indicators to measure the quality, quantity and participation of early childhood services
Burnie Works	<ul style="list-style-type: none"> How we use data – Impact report 2022-23 Community Knowledge Collectors
Nexus	<ul style="list-style-type: none"> Currently developing a data blueprint to scope data needs, gaps and actions across SPSP sites
ARACY	<ul style="list-style-type: none"> NEST Framework Wellbeing of Aust Children Currently supporting several PBI in developing suitable indicators and sourcing data assets available to measure
Infoxchange	<ul style="list-style-type: none"> Data Sharing Agreements Digital Transformation Hub Guides and Resources

Resources – tools, techniques and resources that exist in the ecosystem can support the implementation of the framework

Population Data Bucket- <i>Data Access and Platforms</i>	<ul style="list-style-type: none"> QFCC- Growing up in Qld Data Explorer QCOSS Data Hub Aust Child and Youth Wellbeing Atlas ABS Table Builder Advanced – note access only available to universities Ask Izzy AIHW – National Child Wellbeing Data Asset – under development SEER Dataplace- National Data Commissioner
--	---

Resources – tools, techniques and resources that exist in the ecosystem can support the implementation of the framework

	<ul style="list-style-type: none"> • Data Snapshot – Tasmanian Gov • Breaking Down Barriers Community Profiles • Youth View Data Dashboard • Regional Data Hub- interactive map • Regional Data Hub home page • Qld open data portal
Population Data Bucket – Indicators	<ul style="list-style-type: none"> • Australian Research Data Commons • ARACY NEST – frameworks, research and reports • Measuring What Matters • AIHW • AIHW scoping child wellbeing measurements • Measuring Disadvantage in Early Childhood – Centre for Community Child Health • RSTO indicator Guide
Service Data Buckets	<ul style="list-style-type: none"> • Practice guidelines- National Health and Medical Research Council • Data sharing agreements- A guide to data sharing – Stive Together
Community Data Bucket	<ul style="list-style-type: none"> • Ethical Guidelines – Aust Evaluation Society • Data Ethics Canvas- Open Data Institute • Digital Child Ethics Toolkit
Research Data Bucket	<ul style="list-style-type: none"> • AIFS survey resources • QCOSS resource hub • Inequalities and Social Action Research Cluster
Exchanging Knowledge	<ul style="list-style-type: none"> • Data Maturity Plan- Data Orchard NFP Data Maturity Framework • Data Maturity Assessment- Data Maturity Assessment • transforming raw data into value and actionable insight- Data for Social Good • Change Cycle- Collaboration for Impact
Learning and Acting Together	<ul style="list-style-type: none"> • transforming raw data into value and actionable insight- Data for Social Good • QCOSS resource hub • Social Impact Measurement Network Australia
Principles	<ul style="list-style-type: none"> • Measuring what matters- principles for a balanced data suite
Conditions	<ul style="list-style-type: none"> • Data Governance- what you need to know and how to get started • Data Storage • Change Cycle- Collaboration for Impact
Enablers	<ul style="list-style-type: none"> • Competency Framework- Aust Evaluation Society • Good Data Institute
AI	<ul style="list-style-type: none"> • Australian Framework for Generative AI in Schools • Automated Decision Making and Society ARC Centre of Excellence

Next Steps

The framework sets out the key components, describes the resources and supports for each component and outlines leverage points and connections. Through the discovery phase the design team identified that there is significant investment and progress for PBIs in accessing population data, but not as much effort or investment in the other key components described. It identified that some of the content;

- is available- but not easily accessible or not in the format needed
- has been developed (by one PBI or for a particular area) – but not shared due to them needing further development or adaptation to make them sharable
- is not available- in need of investment to develop

Therefore part of the next phase of building the framework is not only about creating new, but connecting the existing supports and resources to make them easily accessible to all PBIs.

The following key components were identified as opportunities for investment

- **Service Data Bucket-** lack of available data
- **Community Data Bucket-** resources to help with collecting and analysing community intelligence
- **Learning and Acting Together-** how to connect data buckets for learning and acting
- **Exchanging Knowledge -** data access agreements
- **Conditions-** data governance and practical resources
- **Enablers-** skills and attributes needed now and into the future

DRAFT

The co-development phase identified the following areas for collective action

- The approach to the implementation of the Framework is viewed as an opportunity in and of itself to apply, test and learn together, in addition to each action and activity
- To support the action plan implementation the team will codesign a collective approach and ways of working (using the Data Framework of exchanging knowledge, learning together, acting together) to guide the individual actions, activities and ways of understanding the impact.
- The proposed data lab (for testing and learning) will provide the social infrastructure for collective learning and measuring impact

Framework Component	PROJECT SUMMARY		Lead Organisation	Phased Approach	
				2024	2025
• Framework	1	Web Portal to house framework resources	TQKP		
• Learning Together	2.1	Practices, methods and tools for connecting data to understand the local system and inequalities	Restacking the Odds -MCRI		
• Acting Together		Applied learning package to support practitioners in connecting data	Griffith Regional Insights Data Lab (RIDL)		
• Community Data Bucket	2.2	Practices, methods and tools for collecting and analysing community data buckets	Griffith RIDL		
• Service Data Bucket	2.3	Practices, methods and tools for collecting and analysing service data buckets	Gladstone Region Engaging in Action Together (GRT)		
• Population Data Bucket	3	Streamline access to population data, along with developing the resources and a network of critical data friend to support practice	Qld Government – Dept of Treaty, ATSI Partnership, Communities and the Arts		
• Exchanging Knowledge		Explore opportunities to align, share and/or leverage data and evaluation expertise efficiently, across multiple communities	TBC- QCOSS currently provide a help desk and Nexus model could include this function		
• Principles	4	Develop the key PBIs data principles and describe what they look like in practice	Infoxchange + Design Team		
• Framework	5	Develop case studies/examples on each of the framework components	SEER Data and Analytics		
• Enablers	6	Describe, codify and document the skills and capabilities needed for accessing and using data for learning, acting and measuring together	University of Sunshine Coast		
• Conditions		Develop learning modules for existing undergraduate courses	TBC		
• Framework	7	Data Lab- shared testing, learning and problem solving infrastructure	TQKP		
		Learning Canvas platform to test and build capability and legitimacy by delivering results	Brisbane South PHN		
• Conditions	8	Collate practical resources that will support PBIs in generating, receiving, holding and storing data	Infoxchange		

Proposed Actions details

Framework Component	Actions	Key Activities	Notes	Lead	Advisors
Framework	1. Develop the web portal to collate content, learn and test the framework	Source suitable platform to host the framework (ARACY, TQKP, Nexus, QCOSS, Infoexchange, QCFF, QLD Gov) Fund (or seek funding) for the design and housing of the platform resources- that is easy to find and access	QCOSS are redesigning the Data Hub, Nexus could be the host- depending on outcome of funding and model	██████████ Thriving Qld Kids Partnership	<ul style="list-style-type: none"> • ARACY • Nexus • QCOSS • Infoexchange • QCFF
Framework	• Define the practices, methods and tools needed for;				
Learning Together Acting Together	2.1 connecting data to understand the local system and inequalities	<p>Phase 1 Fund (or seek funding) for a action based project that</p> <ul style="list-style-type: none"> • builds on and documents the practice learnings from the work of RSTO/Logan Together- with a focus on connecting the four buckets of data to support learning, acting and measuring • develops sharable template, tools and resource to support PBIs how to bring the data together- <p>Phase 2 Customise with PBI leaders an existing micro credential course that has been designed around story telling and visualisation for PBI- with a focus on the bring together the four buckets- 4 modules with proven practical application</p>	<p><i>This project could be leveraged to collate and produce case studies -action 5</i></p> <p><i>See page 14 for details on the two options</i></p>	██████████ Restacking the Odds ██████████ Griffith Regional Insights Data Lab (RIDL)	<ul style="list-style-type: none"> • Logan Together • CCCH • RSTO • PBI Reps
Community Data Bucket	2.2 collecting and analysing community data buckets	Fund (or seek funding) for a project that <ul style="list-style-type: none"> • develops key questions bank- including practice guidelines to support the process • identify and describe methods, practice and skills that support PBIs in collecting and making sense of the data (AI, Social listening, conversations, sentiment) • provides key tools and templates (ie, consent forms, tips sheets etc..) 	<p><i>See page 14 for further details on project</i></p> <p><i>Check Clear Horizons PBI Evaluation Framework</i></p>	██████████ Griffith Regional Insights Data Lab (RIDL)	<ul style="list-style-type: none"> • Clear Horizons • PBI Reps

Framework Component	Actions	Key Activities	Notes	Lead	Advisors
Service Data Bucket	2.3 collecting and analysing service data buckets	<p>Fund (or seek funding) for a project that</p> <ul style="list-style-type: none"> builds on and create the practices, tools and template for collecting service level data- including identifying opportunities and recommendations for future work to support community services data collection to improve practice 	<i>GRT have a focus on service data- this project leverages this work, grounds it in practice and allows for the codifying of the tools to be able to be shared.</i>	██████████ Gladstone Region Engaging in Action Together (GRT)	██████████ ██████████ State Gov ██████████ -QCOSS ██████████ - SEER ██████████ - RSTO
Population Data Bucket Exchanging Knowledge	2. Work with Qld Government to streamline access to population data, along with developing the resources and a network of critical data friend to support practice	<ul style="list-style-type: none"> Develop the data request templates (shell) and supporting guidance Explore the best way to support PBIs in understanding what open/closed Qld Data is available, where you need to go, and how to access it Develop a list of data content experts (network of critical friend bank) for PBIs to contact for initial support, including a guide/checklist that can support the PBIs in the conversation- <i>explore the opportunity to support the expansion of QCOSS's Data helpdesk function for the PBIs to support and use data</i> Build a data access shared agreement (Qld customer and digital group) Explore opportunities to align, share and/or leverage data and evaluation expertise efficiently, across multiple communities 	<p><i>Shane Marshall – Chief Information Officer used to facilitate an existing group across agency data sharing- potential link to this project</i></p> <p><i>QCOSS- currently provide a data help desk function to members- but is over-prescribed</i></p> <p><i>Nexus- might have this as a function of the centre</i></p>	██████████ Queensland Government- Dept of Communities	██████████ - GRT ██████████ - Griffith RIDL ██████████ - QCOSS ██████████ -SEER ██████████ - RSTO ██████████ - CHQ
Principles	3. Develop the key PBIs data principles and describe what they look like in practice			██████████ ██████████ ██████████ Infoxchange	<ul style="list-style-type: none"> Place-based Data Framework Design Team
Framework	4. Develop case studies/examples on each of the framework components	<ul style="list-style-type: none"> Outline of case study structure, including design and content Agree on a list of case studies for inclusion Set up/conduct interviews with relevant parties Write content, including two rounds of edits 	<p><i>Option 1- Stand alone project</i></p> <p><i>Option 2- connect project in with Action 2.1</i></p>	██████████ ██████████ SEER Data and Analytics Comms Team	<ul style="list-style-type: none"> PBI Reps

Framework Component	Actions	Key Activities	Notes	Lead	Advisors
		<ul style="list-style-type: none"> Source and/or record content (remotely) Final design to be PDF and/or webpages as determined in a full scoping process. 			
Enablers	5. Scope the skills and capabilities needed- and the training required to ensure PBIs have access to the skills and capabilities needed using data for shared decision making and measurement	Fund (or seek funding) for a project(s) that Phase 1 <ul style="list-style-type: none"> describe, codify and document the skills and capabilities needed for accessing and using data for learning, acting and measuring together (at each stage of PBIs- maturity level CFI collaborative change cycle) develop PBI data position descriptions (<i>describing the capability and attributes for different data roles</i>) scope the current courses that are developing the PBIs data skills and if the course content covers place-based/collective impact frameworks (ie health promotions, community relations, social innovation, international development, data science etc. 	<i>RSTO- barriers and enablers document that could be useful reference point</i>	Phase 1 ██████████ University of Sunshine Coast	<ul style="list-style-type: none"> ██████████ State Gov ██████████ Infoxchange ██████████ Logan Together PBI Reps
		Phase 2 develop place-based learning materials to incorporate into existing courses- that have focus on place		Phase 2 Identified through phase 1	
Conditions + Framework	6. Develop the social infrastructure that connects place-based data practitioners and cultivates space for peer-to-peer learning, relationship-building, and reflection- through a problem solving (action focussed) approach	<ul style="list-style-type: none"> Design PBI Data lab learning space to test the component content and identify opportunities for further development with key PBI, Government and Funders Deliver 4 PBI Data Lab (per year) to enable the collective testing of and learning from the projects and to understand and measure the impact of the activities- (formative evaluation process) 	<i>Follow up with ██████████ UQ</i>	██████████ Thriving Qld Kids Partnership	<ul style="list-style-type: none"> Place-based data framework action leads and advisors Funding Partners
		<ul style="list-style-type: none"> Utilise the Learning Canvas as a shared learning platform, and test and build capability and legitimacy by delivering results. 	<i>Platform will allow the action teams to learn and measure impact</i>	██████████ Brisbane South PHN (5 days Inkind provided)	

Framework Component	Actions	Key Activities	Notes	Lead	Advisors
Conditions	7. Develop and collate practical resources that will support PBIs in generating, receiving, holding and storing data			Infoxchange	<ul style="list-style-type: none"> • PBI Reps

DRAFT

FURTHER PROJECT DETAILS

2.1 Action (Phase 2)

Learning Together + Acting Together- connecting data capability Project

Option 1: Customise & Deliver with Sherena to adapt module examples to specifically suit PBIs (leverage pre-existing knowledge and case-studies).

- ~ 5 days for customisation= 5 days FTE (2.5 each between RC and SZ)
- 4 FTE days delivery for each RC and RIDL data analyst
- 1 FTE day delivery SZ
- ~4 FTE days assessments/ presentations and marking (RC and RIDL data analyst)

Option 2: RIDL customise and delivery existing data visualisation and storytelling modules – – same outcome, just slightly longer timeframe, as unable to leverage Sherena's expertise in the area.

2.2 Action

Community Data Project- collecting and analysing community data buckets

Practical, best-practice frameworks, how-to guides and resources, to be confirmed through a co-design process to ensure we're creating is actionable and relevant: Example resources to be created:

- Best practice guide to collecting community intelligence data through interviews, focus-groups, online surveys with a bank of pre-set customisable validated questions in customisable templates.
- How to guide for creating a consent form to be completed by survey respondents, addressing organisational practices for data collection, storage and use with a list of preset, validated questions and a customisable template.
- Tips, tricks and recommended tools for making sense of text-based, qualitative community intelligence data (basic sentiment analysis, useful data analysis and visualisations techniques and tools)
- Interactive Infographic on accessing community data - what is community intelligence data, where might it sit within your organisation, example data types & applications, and where to access open-source resources, tools and datasets.

3 - 4 wks each RC and RIDL DA FTE, includes an initial co-design and final feedback session - cost and timeframe will be dependent on the exact number of resources/assets being created and the exact scope of the final project

Other project ideas from individual discussions

- a) Support for the expansion of a Data helpdesk function for the sector to support and use place-based data. Currently QCOSS operationalise this as a peak body, however QCOSS resources are limited and therefore do not promote widely to the sector. (This aligns well with the 'conditions' component.)
- b) Invest in data capability training for the sector to upskill their use in data visualisation tools to visualise place-based data. QCOSS are currently co-ordinating PowerBI training that could be funded through this initiative. (This aligns well with the 'enablers' component).
- c) Build on the QCOSS data hub to create and maintain a platform for PBIs to access to open/publicly available data. Currently QCOSS are working on building a data hub. (This aligns well with the 'Population data' component).